

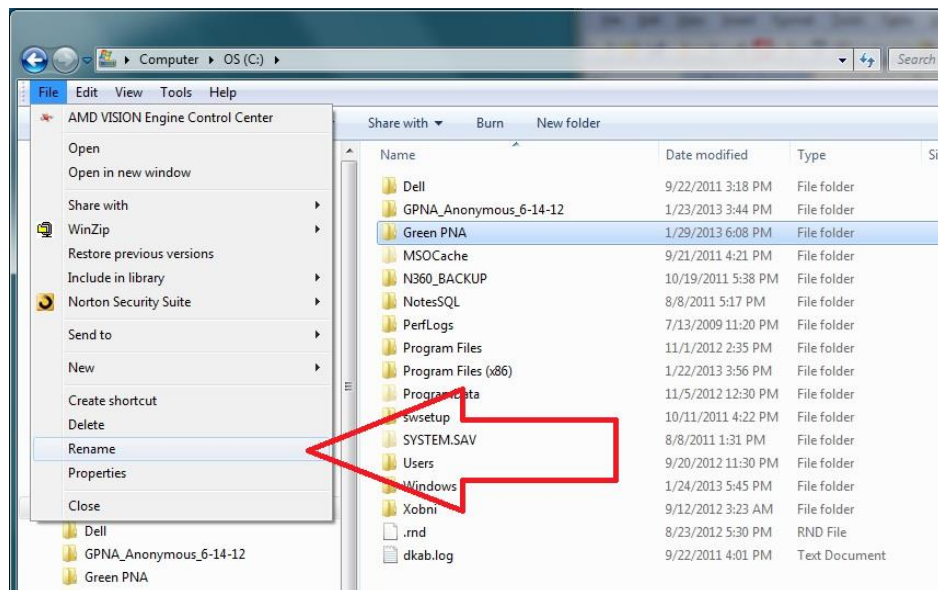
QUESTION

What is the protocol for storing more than one copy of the GPNA tool on my pc or linked system either because I work with multiple PHAs, each of which must use its own separate tool, or because I might want to hold separate versions as “working copies” for later assembly of information into a “record/reporting copy”?

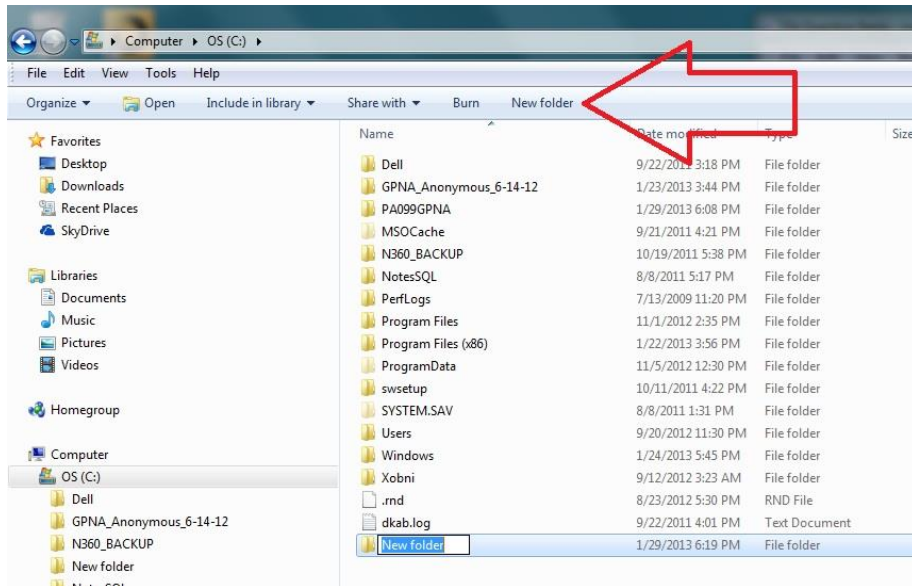
REPLY

The solution is to re-name and move the tool subdirectory from “Green PNA” to another location and to re-name the subdirectory. To prevent mishaps, it is also advisable to rename the GPNA data file in the subdirectory so that it will have different name from other GPNA data files.

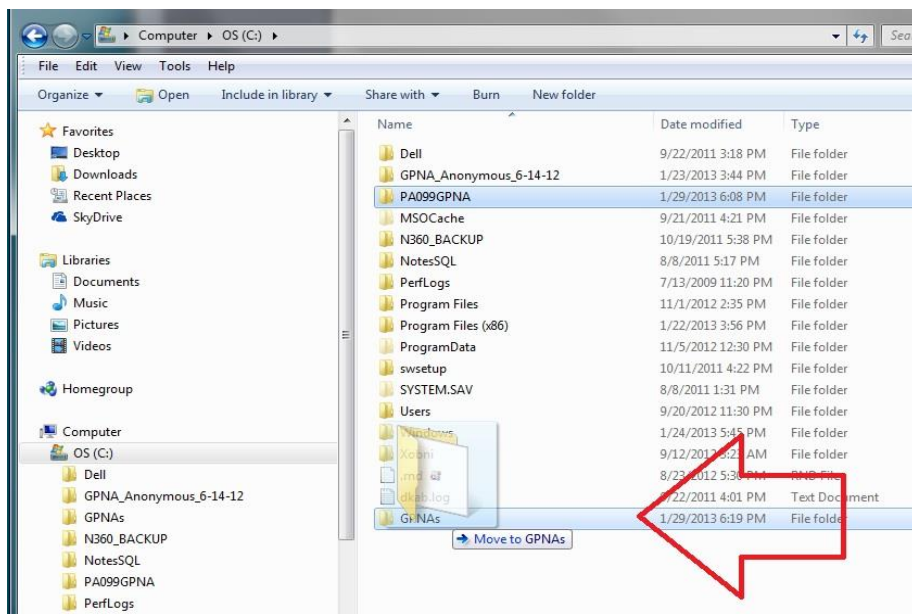
We recommend renaming the subdirectory from “C:\\Green PNA” to the PHA code of the client. For example if the client’s PHA code is PA099, rename the subdirectory to “C:\\PA099GPNA”. Likewise re-name the data file in the directory from the default “GreenPNAFull.accdr” to “PA099GPNA.accdr”. (It is vital to keep the “accdr” extension.)



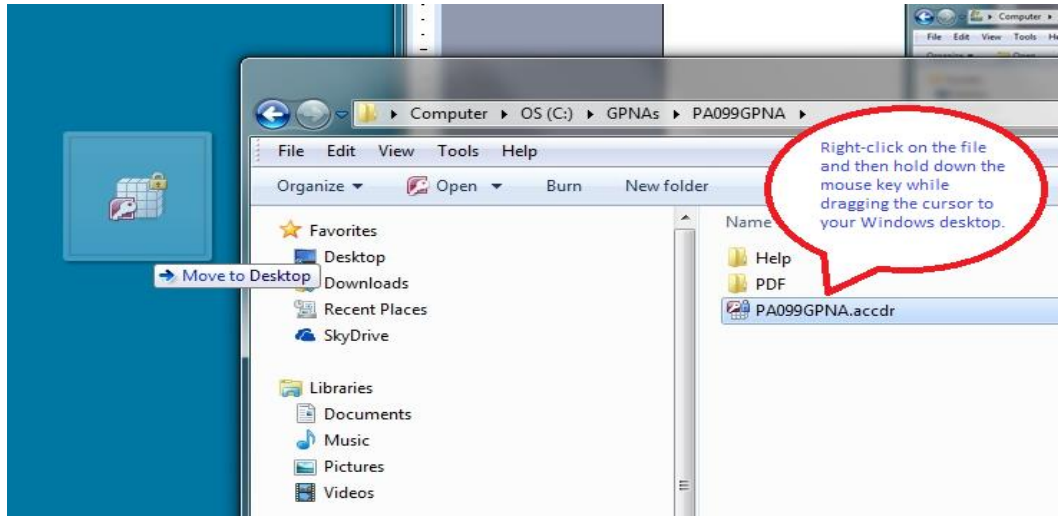
To follow good computer housekeeping practices, and not end up with many sub-directories directly off your C: drive, we recommend creating a sub-directory called “C:\\GPNAs”.



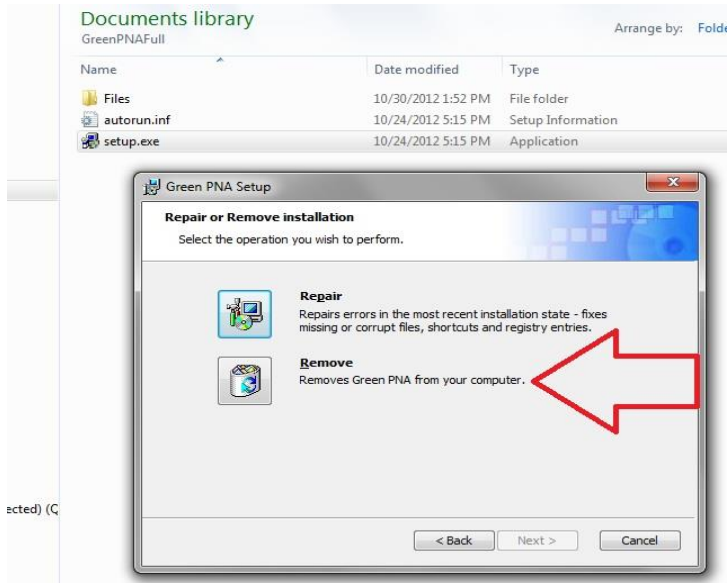
Then move the entire subdirectory that you renamed into the “C:\\GPNA” subdirectory. So in this example the first copy of the GPNA would now reside at “C:\\GPNA\\PA099GPNA”, and the data file would reside at “C:\\GPNA\\PA099GPNA\\PA099GPNA.accdr”.



We recommend creating a shortcut to “C:\\GPNA\\PA099GPNA\\PA099GPNA.accdr” on your Windows desktop.



Now you can go back and run the “setup.exe” program located in the “GreenPNAFull” subdirectory that you originally ran to install the first copy of the program. The Set-up Wizard will offer you the choice of Repairing or Removing the program. Select “Remove”. If you followed the steps correctly, your GPNA data is safely where this Wizard will not affect it.



Now you can go back and run the “setup.exe” program again and this time it will install a second version of the GPNA Tool. Follow this procedure as many times as needed to accommodate all your GPNA clients.